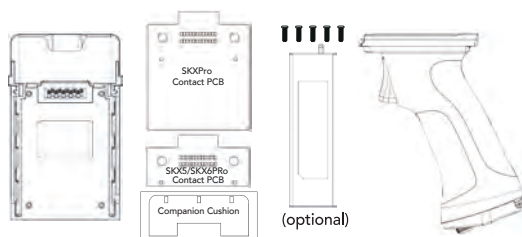


What's in the Box? - Pistol Grip

- ▶ 1 x Pistol Grip
- ▶ 1 x Pistol Grip Adaptor
- ▶ 1 x Contact PCB (SKXPro or SKX5/SKX6Pro)
- ▶ 1 x Companion Cushion
- ▶ 1 x 6000mAh Li-Polymer Battery (optional)
- ▶ 4 x screws + 1 extra



*SKX SmartSled sold separately.
Tweezers and PH0 screw driver (not included)
will be necessary to complete assembly.

Additional Accessories

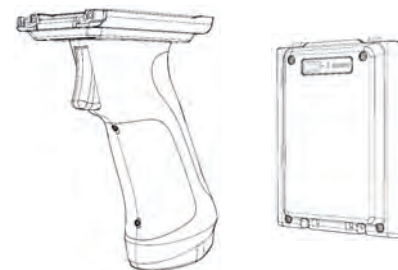
- ▶ 0.5W UHF Reader Companion
- ▶ 1.0W UHF Reader Companion
- ▶ SKX Pistol Grip 1-Slot Charging Cradle
- ▶ SKX Pistol Grip 5-Slot Charging Cradle
- ▶ SKX 1-Slot Charging Cradle
- ▶ SKX 5-Slot Charging Cradle
- ▶ XCover 1-Slot Charging Cradle
- ▶ XCover 5-Slot Charging Cradle
- ▶ SKXSLED-mPOS
- ▶ SKXSLED-MSRIC



116 Village Blvd, Ste 305, Princeton, NJ 08540
+1 609-256-4700 p | +1 609-228-4373 f
info@koamtac.com | www.koamtac.com



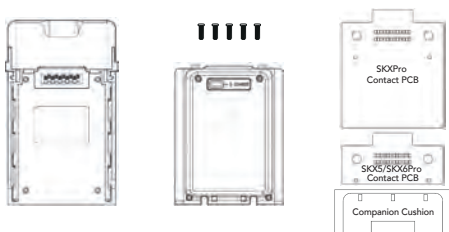
SKX™ SmartSled® Pistol Grip/Extended Battery Assembly Manual



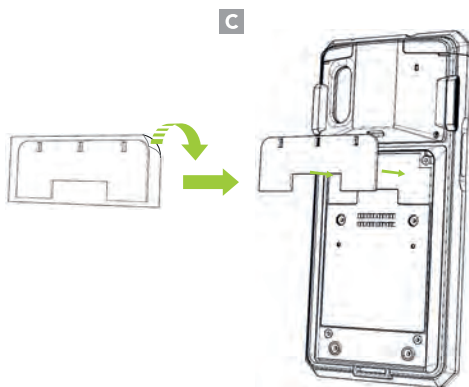
* All pictures shown are for illustration purposes only.
Actual product may vary.

What's in the Box? - Extended Battery

- ▶ 1 x Extended Battery Adaptor
- ▶ 1 x Extended Battery
- ▶ 1 x Contact PCB (SKXPro or SKX5/SKX6Pro)
- ▶ 1 x Companion Cushion
- ▶ 4 x screws + 1 extra

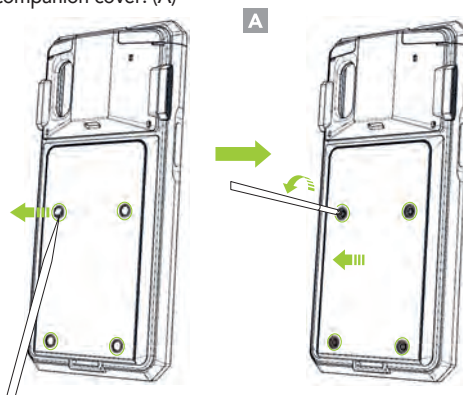


2. Remove the transparent protective tape from the back of the companion cushion and attach it to the back of the SKXPro as shown below. (C)



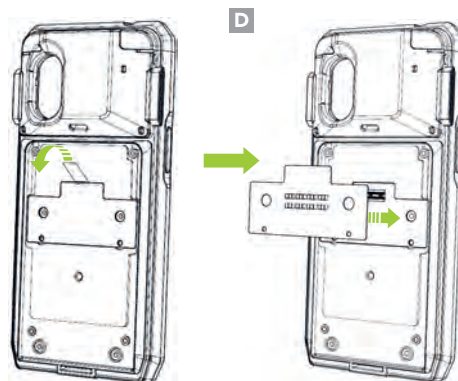
Assembly Instructions

Using tweezers, carefully remove all four (4) screw caps from the back of the SKX™ SmartSled®. Then, remove all (4) screws from the back of the SKX together with the companion cover. (A)



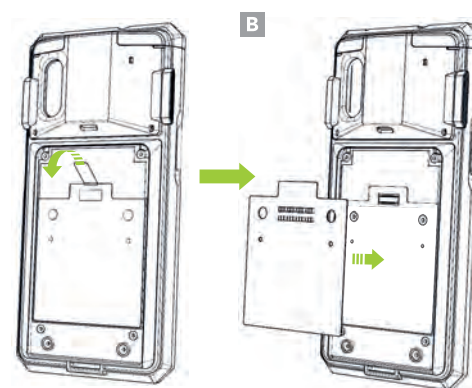
Contact PCB Assembly - SKX5/SKX6Pro

Remove the blue protective tape from the front of the companion PCB. Next, attach the contact board to the back of the SKX as shown in the image. (D)

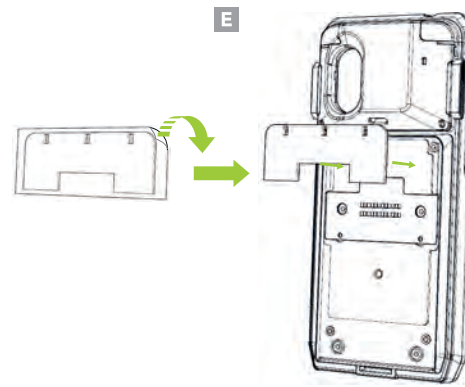


Contact PCB Assembly - SKXPro Only

1. Remove the blue protective tape from the front of the companion PCB. Next, attach the contact board to the back of the SKXPro as shown below. (B)

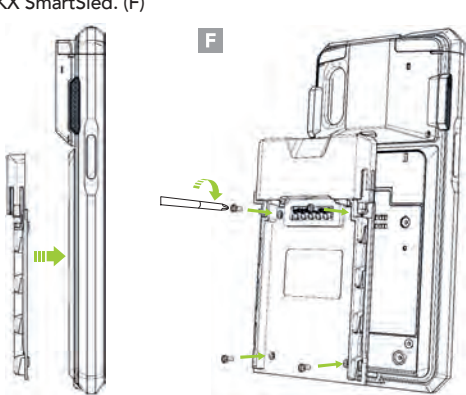


2. Remove the transparent protective film from the back of the companion cushion and attach it to the back of the SKX as shown below. (E)



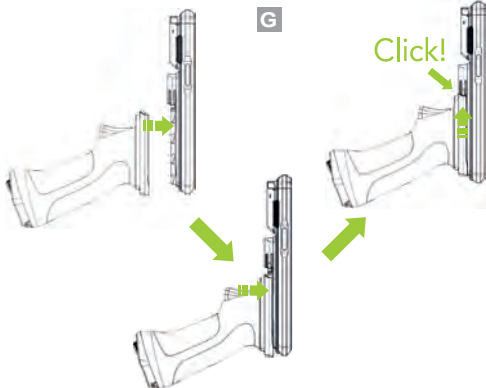
Pistol Grip Adaptor Assembly

Align the screw holes of the Pistol Grip Adaptor with the screw holes of the SKX SmartSled. Use the four (4) included screws to attach the Pistol Grip Adaptor to the SKX SmartSled. (F)



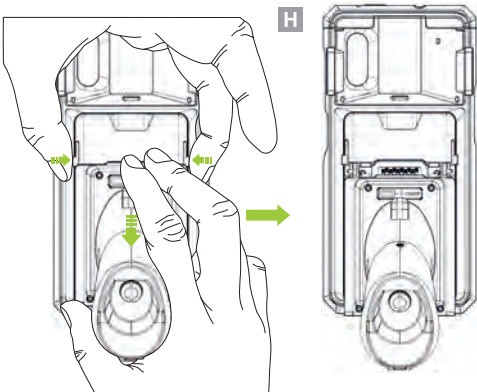
Pistol Grip Assembly

Align the top notch of the Pistol Grip with the top notch of the Pistol Grip Adapter. Slide the Pistol Grip up until it clicks. (G)



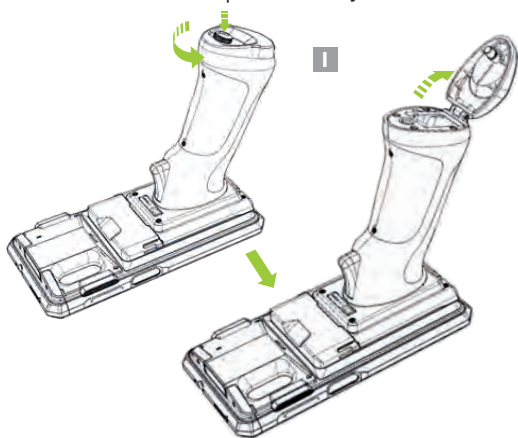
Removing the Pistol Grip

Squeeze the tabs on both sides of the Pistol Grip Adapter and slide the Pistol Grip down. Pull the Pistol Grip away from the Pistol Grip Adapter and the SKX SmartSled. (H)

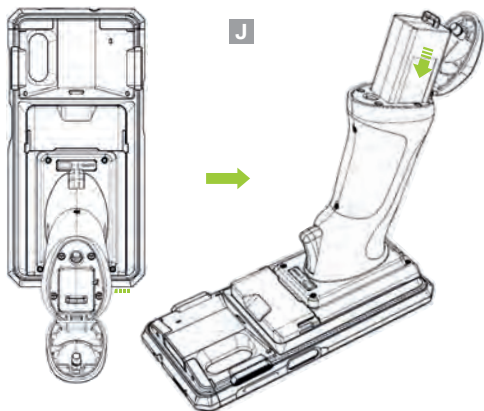


6000mAh Li-Polymer Battery Assembly Instructions

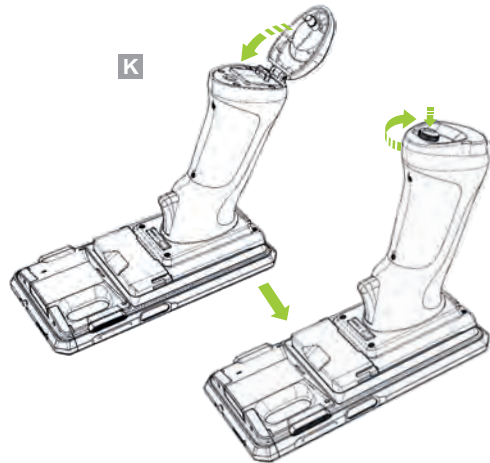
1. Turn the knob on the bottom of the Pistol Grip counter-clockwise to open the battery door. (I)



2. Insert the battery into the Pistol Grip. (J)

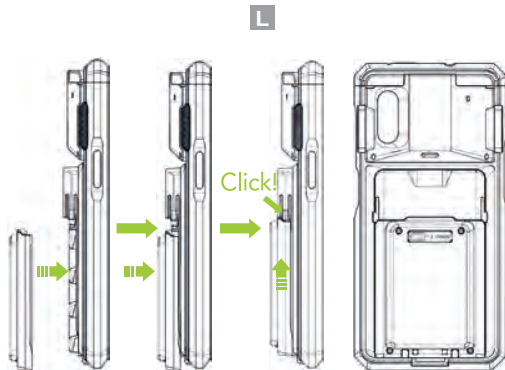


3. Close the battery door and turn the battery door knob clockwise to lock. (K)



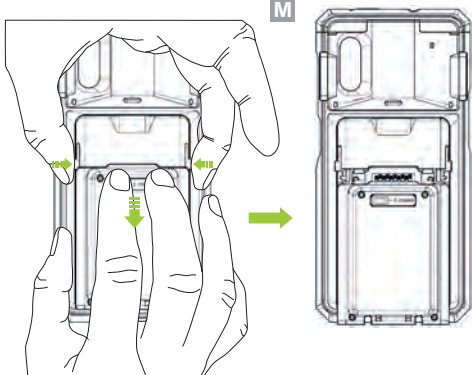
Extended Battery Assembly

Align the top notch of the Extended Battery with top notch of the Extended Battery Adaptor. Slide Extended Battery up until it clicks. (L)

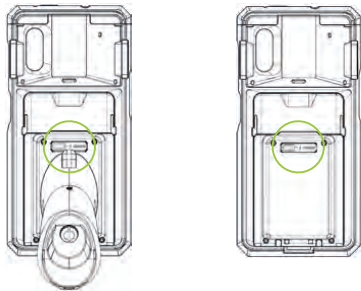


Removing Extended Battery

Squeeze the tabs on both sides of the Extended Battery Adaptor and slide the Extended Battery down. Pull the Extended Battery away from the Extended Adaptor and the SKX SmartSled. (M)



Pistol Grip Battery/Extended Battery Indicator Status



* When Charging

Green: Fully Charged

Orange: Charging

Red : Low Battery

* When In Use

Blinking Green: Fully Charged

Blinking Orange: Discharging

Blinking Red: Low Battery